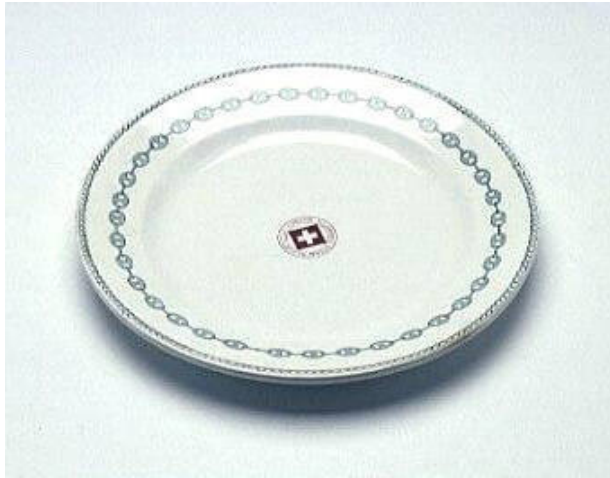


Basic Detail Report



00031879

Title

Dinner plate of the Illawarra Steam Navigation Company

Date

1858-1955

Primary Maker

Southern Cross

Medium

Ceramic

Dimensions

Overall: 75 x 75 x 33 mm

Name

Plate

History

The Illawarra Steam Navigation Company (ISN) was formed in 1858 from the amalgamation of three New South Wales coastal shipping companies - the Kiama Steam Navigation Company, the Shoalhaven Steam Navigation Company, and the General Steam Navigation Company. The new company increased its fleet and extended its business, holding a near monopoly of the shipping along the New South Wales south coast. In 1858 its fleet consisted of the paddle steamers HUNTER, MIMOSA, ILLAWARRA, KIAMA and WILLIAM IV. In 1862, the ILLAWARRA was sold, and in the 1870s the ILLALONG and JOHN PENN joined the fleet. The steamers traded to Wollongong, Kiama, Shoalhaven, the Clyde River, Ulladulla, Merimbula, Twofold Bay and Port Macquarie. In the company's early days passengers and livestock (mostly poultry, calves and pigs) were close travelling companions - rather than the passenger cabins of the company's later steamships, the early vessels constructed sleeping berths at night in the vessel's saloon with privacy curtains. In 1904, the company's name was changed to the Illawarra & South Coast Steam Navigation Company, but it was often still referred to as ISN. With the commissioning of the MERIMBULA, ALLOWRIE, BEGA and EDEN into the fleet in the early 20th century, the length of voyages greatly decreased and passenger comforts were enhanced. With the rising competition of passenger road and rail transport, the company focused solely on cargo shipping from the late 1920s. After almost 100 years in operation, the company was placed into voluntary receivership and was delisted from the stock exchange in 1955.