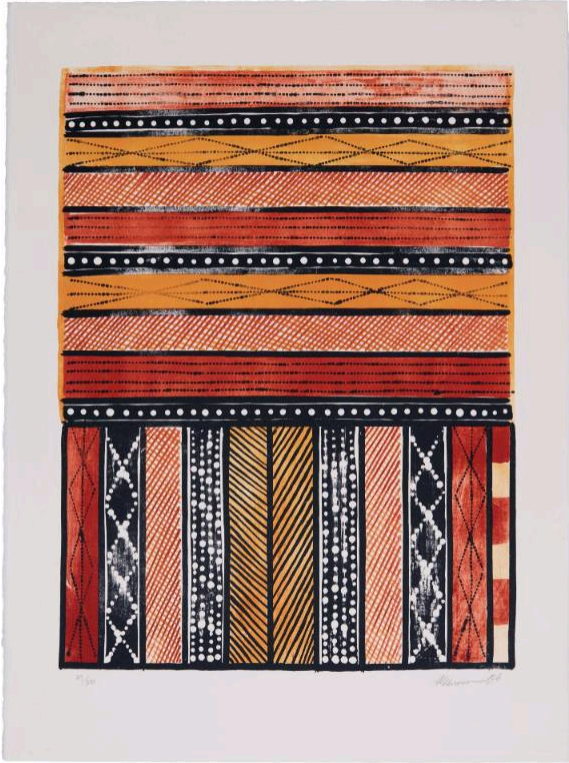


Basic Detail Report



00045081

Title

Yirrinkiri Jilamara

Date

2006

Primary Maker

Pedro Wonaeamirri

Medium

Paper (Velin Arches 250gsm), ink

Dimensions

Overall: 760 x 560 mm

Name

Lithograph

History

In 1606, Willem Janszoon commanded the DUYFKEN in Australia's northern waters, searching for proof that the country would be a good trading partner with the vast VOC - Dutch United East India Company. The west coast of Cape York Peninsula became the first documented landing of Europeans on the Australian mainland, although Janszoon concluded that there would be little prospect of trade. This print is part of the DUYFKEN Aboriginal Print Portfolio, a collaboration between the Embassy of the Kingdom of the Netherlands and the Australian Print Workshop (APW) in Fitzroy, Melbourne. In July 2006, ten of Australia's talented and emerging Indigenous artists were brought to Melbourne to take part in APW's printmaking workshop. The theme of the portfolio is 'first encounters' and the title takes its name from the first Dutch ship to land on Australian shores. The artists were chosen to represent the regions visited by the Dutch to produce a permanent record of the 400 years of Dutch contact with Australia. These regions include Melville Island, Arnhem Land, Cape York, Western Australia and Tasmania. Techniques used include photolithograph, linocut and hard-ground etchings. The portfolio was sponsored by Forbo Flooring, Rabobank Australia, Rio Tinto Aluminium and Wesfarmers Arts and is limited to 50 numbered copies plus five artist's proofs, two APW proofs and two Presentation proofs.