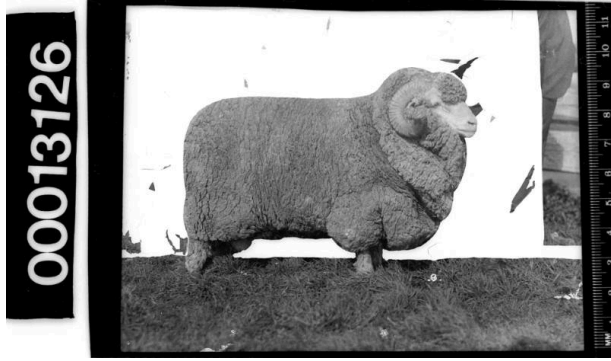


# Basic Detail Report

---



**00013126**

**Title**

Portrait of a ram at the Royal Agricultural Show, Sydney

**Date**

1934

**Primary Maker**

William James Hall

**Medium**

Cellulose nitrate negative, black & white

**Name**

Nitrate negative

**History**

In 1822 the Agricultural Society of New South Wales was established. One of the society's central missions was to stage an annual competitive display of animals and produce, intended to increase the quality of Australia's produce through competition. The organisation and the event aimed to allow producers to meet and conduct business as well as to educate the general public on agricultural techniques and livestock production. The first show was held in 1823 in Parramatta, however an economic downturn forced the society to disband in 1836. In 1857 a new society was established that later became known as the Agricultural Society of New South Wales. Under this organisation a new annual show was organised that was held, at various times, in Parramatta and Prince Alfred Park. In 1880 the society leased 40 acres of land at Moore Park and the first show at this location was successfully held in 1882. At Moore Park the show continued to prosper and in 1891 Queen Victoria granted permission for the society to use the prefix 'Royal' so that it became the Royal Agricultural Society of New South Wales (RASNSW). In 1894 the introduction of electric lighting meant that the opening hours of the Royal Easter Show could be extended into the evening. The Royal Easter Show continued to expand, maintaining strong attendance numbers and an increasing variety of competitions and entertainment. In the 1990s the show moved from Moore Park to the Sydney Olympic Park at Homebush Bay.